



Celotex CG5000

Premium Cavity Wall Insulation Board

Celotex
Insulation Specialists

Introduction

Celotex CG5000 is our premium performance PIR solution specifically designed for use within partial fill cavity wall applications. Through ongoing product innovation and breakthrough design, CG5000 represents pioneering progression within the PIR market offering an insulation board with enhanced thermal performance, an A+ rating when compared to the BRE Green Guide, Class O fire performance and super low emissivity values with Celotex IQ.

With super low emissivity textured aluminium foil facings, CG5000 is manufactured from rigid polyisocyanurate (PIR) using a blowing agent that has low global warming potential (GWP) and zero ozone depletion potential (ODP) .

With Celotex CG5000 you are specifying an insulation board that:

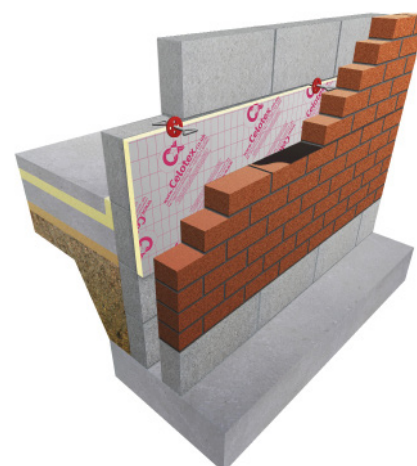
- Has a lower thermal conductivity value (0.021W/mK) compared with other typical PIR insulation boards providing enhanced thermal performance
- Has super low emissivity with Celotex IQ, delivering some of the highest rigid board insulation solutions
- Achieves an A+ rating when compared to the BRE Green Guide
- Has Class O fire performance throughout the entire product in accordance with BS 476
- Is available in a broad range of thicknesses from 41mm-100mm and in a board size of 1200mm x 450mm
- Is specifically targeted at partial fill cavity wall applications

Applications

Celotex CG5000 is specifically for use within partial fill cavity wall applications.

Specification Clause

The insulation shall be Celotex CG5000 _____mm thick, comprising a polyisocyanurate rigid foam insulation core featuring Celotex IQ providing super low emissivity textured aluminium foil facings on both sides and Class O fire performance throughout the product in accordance with BS 476. CG5000 is A+ rated when compared to the BRE Green Guide 2008 and is CFC/HCFC free with low GWP and zero ODP and CE marking compliance to BS EN 13165. CG5000 is manufactured in accordance with quality management systems ISO 9001 and environmental management system ISO 14001. All products must be installed in accordance with instructions issued by Celotex Limited.



Celotex CG5000 in a masonry wall application

Sustainable Insulation

Celotex PIR insulation has been independently assessed by BRE Global and has been accredited with an A+ rating when compared to the BRE Green Guide.

The results also show that Celotex offers a lower environmental impact than other typical PIR manufacturers.

For further information about Celotex' sustainable insulation solutions, visit the sustainability pages of the website at celotex.co.uk



cont...



Celotex CG5000

Premium Cavity Wall Insulation Board

Celotex
Insulation Specialists

Celotex CG5000 Technical Data

Product Code	Thickness (mm)	R-value (m ² K/W)	Weight (kg/m ²)
CG5041	41	1.95	1.52
CG5047	47	2.20	1.71
CG5050	50	2.35	1.81
CG5060	60	2.85	2.16
CG5070	70	3.30	2.48
CG5075	75	3.55	2.64
CG5085	85	4.00	2.96
CG5100	100	4.75	3.38

Physical Properties

	Method	CG5000
Compressive strength	BS EN 826	≥120kPa
Dimensional stability	BS EN 1604	DS(TH)8
Water vapour resistance	BS EN 12086: Method B	>150 MNs/g
Thermal conductivity	BS EN 12667	0.021 W/mK
Fire propagation	BS 476: Part 6	Pass
Surface spread of flame	BS 476: Part 7	Class 1

Typical U-values

U-values will vary depending on application. To calculate a specific U-value, please visit our online U-value calculator at celotex.co.uk

Installation Guidelines

For full details of the installation of Celotex CG5000, please refer to the 'applications' pages of the website at celotex.co.uk

Further Information

If you wish to contact Celotex, please visit celotex.co.uk and click on the 'contact us' page.

For information regarding **storage, installation and handling** of Celotex products, or for Health & Safety advice, please refer to the 'literature' pages of the website at celotex.co.uk.

Celotex has a policy of continuous product development and reserves the right to alter product designs or specifications without prior notice.

Celotex Limited
Lady Lane Industrial Estate,
Hadleigh, Ipswich
Suffolk IP7 6BA

T: 01473 820850
W: celotex.co.uk