



Celotex SL5000

Premium Soffit Liner Insulation Board

Celotex
SAINT-GOBAIN

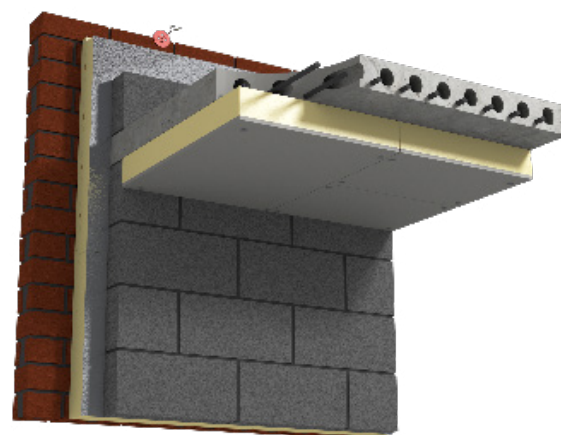
Introduction

Celotex SL5000 is our premium performance PIR solution. Through ongoing product innovation and breakthrough design, SL5000 represents pioneering progression within the PIR market combining premium performance PIR insulation bonded to 6mm calcium silicate. SL5000 is specifically designed for soffit liner applications.

Celotex SL5000 is manufactured from rigid polyisocyanurate (PIR) using a blowing agent that has low global warming potential (GWP) and zero ozone depletion potential (ODP).

With Celotex SL5000 you are specifying an insulation board that:

- Combines the PIR properties of Celotex insulation with calcium silicate providing additional fire performance
- Achieves a lambda value of 0.021 W/mK offering enhanced thermal performance and lower U-values
- Features Class O fire Performance
- Is A+ rated (insulation only) when compared to the BRE Green Guide rating
- SL5000 is supported by the Celotex Technical Centre and Thermal Bridging Models



Celotex SL5000 in a soffit liner application

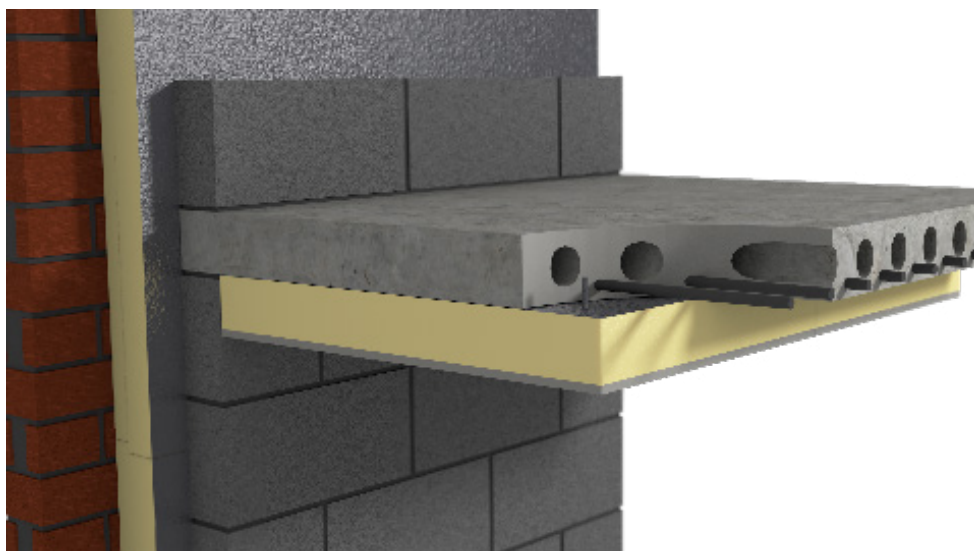
Applications

Use Celotex SL5000 PIR insulation in concrete soffit liner applications

Specification Clause

The concrete soffit liner insulation shall be Celotex SL5000 _____mm thick, comprising a polyisocyanurate (PIR) rigid foam insulation core bonded to a layer of 6mm calcium silicate.

The insulation component of SL5000 is A+ rated when compared to the BRE Green Guide, is CFC/HCFC free with low GWP and zero ODP and achieves CE marking compliance to BS EN 13165. The product is manufactured in accordance with quality management systems ISO 9001 and environmental management system ISO 14001. All products must be installed in accordance with instructions issued by Celotex.



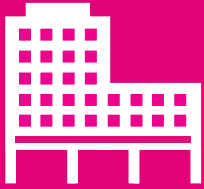
Sustainable Insulation

Celotex PIR insulation has been independently assessed by BRE Global and has been accredited with an A+ rating when compared to the BRE Green Guide.

The results also show that Celotex offers a lower environmental impact than other typical PIR manufacturers.

For further information about Celotex' sustainable insulation solutions, visit the sustainability pages of the website at celotex.co.uk

cont...



Celotex SL5000

Premium Soffit Liner Insulation Board

Celotex
SAINT-GOBAIN

Celotex SL5000 Technical Data

| Product Code | Thickness (mm)* | R-value (m ² K/W) | Weight (kg/m ²) |
|--------------|-----------------|------------------------------|-----------------------------|
| SL5086 | 86 | 3.85 | 9.66 |
| SL5096 | 96 | 4.30 | 9.98 |
| SL5106 | 106 | 4.80 | 10.30 |

*thickness includes insulation + 6mm calcium silicate board

Physical Properties

| | Method | SL5000 |
|-------------------------|-----------------------|-------------------------|
| Compressive strength | BS EN 826 | ≥120kPa |
| Dimensional stability | BS EN 1604 | DS(70,90)3 - DS(-20,0)1 |
| Water vapour resistance | BS EN 12086: Method B | >150 MNs/g |
| Thermal conductivity | BS EN 12667 | 0.021 W/mK |
| Fire propagation | BS 476: Part 6 | Pass |
| Surface spread of flame | BS 476: Part 7 | Class 1 |

Further Information

If you wish to contact Celotex, please visit celotex.co.uk and click on the 'contact us' page.

For information regarding [storage, installation and handling](#) of Celotex products, or for Health & Safety advice, please refer to the 'literature' pages of the website at celotex.co.uk.

Celotex has a policy of continuous product development and reserves the right to alter product designs or specifications without prior notice.

Celotex
Lady Lane Industrial Estate,
Hadleigh, Ipswich
Suffolk IP7 6BA

T: 01473 820850
W: celotex.co.uk

Information is correct at date of publication - November 2015
Registered Office: Saint-Gobain House, Binley Business Park, Coventry, CV3 2TT
Registered in England No 2183896